

INSTRUMENT TRANSFORMERS

CMV and CMV-Hi Temp

Indoor or outdoor current transformers



Product features

- 600 volt, indoor or outdoor
- 10 kV BIL, 25 - 60 Hertz
- 3.5" x 4.5" (88.9 mm x 114.3 mm) oval window
- Designed for pad-mounted distribution transformer metering

Application

The CMV is designed for pad-mounted distribution transformer metering. Available in two external designs, tapered bottom and wide bottom, the unit adapts to a variety of mounting arrangements. Both designs can be mounted directly over the low voltage terminals of pad mounted distribution transformers.

The CMV-Hi Temperature (CMV Hi-Temp) is designed for metering on 600 volt systems inside high ambient temperature environments (85° C) and can be mounted directly upon the energized busbar. The CMV Hi-Temp also offers protection when in contact with the mounting bolts for the bus bar by extending the window liner to the back of the transformer.

Construction and insulation

The CMV and CMV Hi-Temp transformers have an oval shaped ring-type core and fully distributed winding. Thermoplastic rubber insulating material is perma-

The CMV current transformer is primarily used for pad-mounted distribution transformer metering. The CMV-Hi Temp transformer is used for metering on 600 V systems inside high ambient temperature environments (85° C).

nently molded to the core and coil assembly, resulting in a compact unit with excellent mechanical, thermal, and dielectric characteristics.

Secondary terminals and cover

The CMV and CMV Hi-Temp transformers are supplied with embedded compression-type secondary terminals, a short circuit device, and a clear, rectangular snap-on cover suitable for locking with a meter seal. This clear plastic cover allows a visual check of connections and is keyed to ensure the shorting clip is across the terminals when no wires are connected. This safety feature avoids dangerous voltages across the secondary terminals if the primary is energized. Terminals accommodate #14-6 wire and can also serve as a post-type connector by looping wire under the screw head.

Primary

The CMV and CMV-Hi Temp have an oval primary opening suited to fit over the secondary spade in pad-mounted transformers.

Tapered bottom or wide bottom styles

The CMV and CMV-Hi Temp units are available with a tapered or wide bottom. The tapered bottom style provides clearance to fit three transformers (one unit

upside down) over close, triangularly-spaced pad-mounted transformer terminals. The wide bottom style, available only with the CMV, has two additional mounting holes through the body to accommodate optional mounting feet or a one-piece base.

Bus bar adapters

For attachment to the terminal spade, bus bar adapters are shipped with tapered bottom styles. The unit may be secured to a wall panel or bracket by inserting bolts through any pair of mounting holes in the transformer body. If applicable, be sure to use the adapter,

as performance is optimal when the primary conductor is centered in the window.

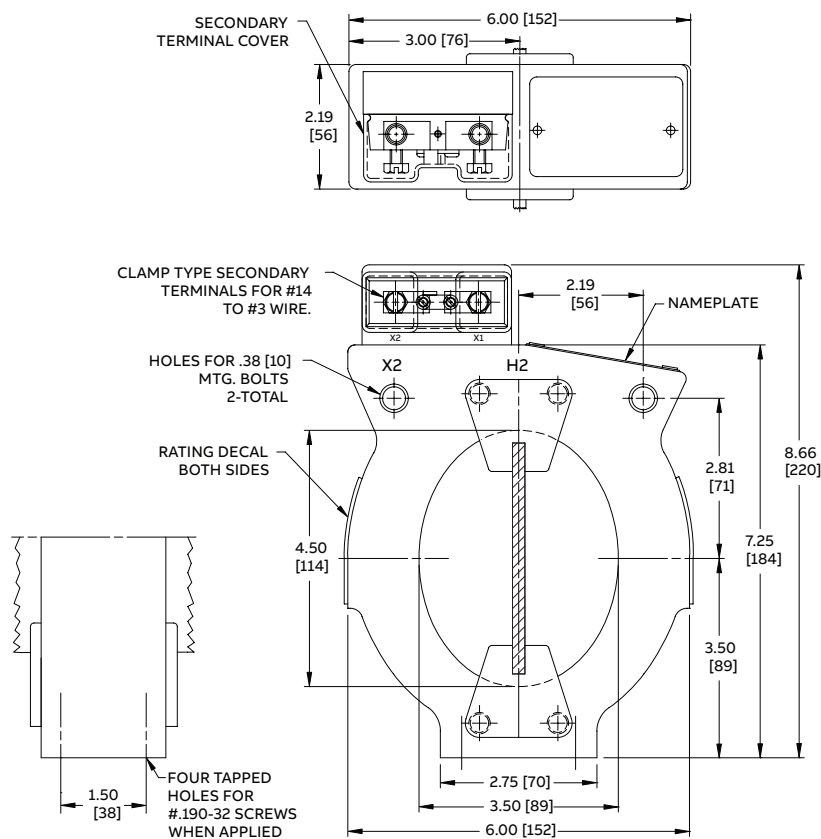
Test reports

Test reports are stored electronically and can be e-mailed in various formats at the time of shipment.

Standards

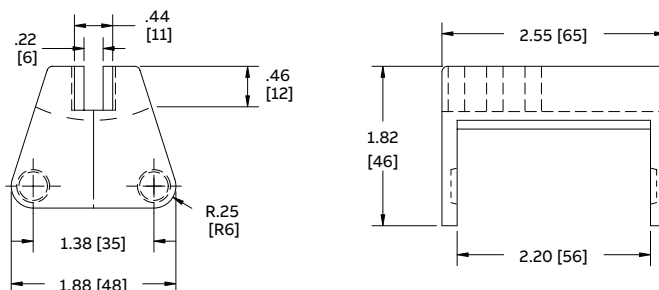
This unit meets or exceeds all requirements of IEEE C57.13-2016 and can be tested to other standards as requested.

Dimensions (inches [mm])

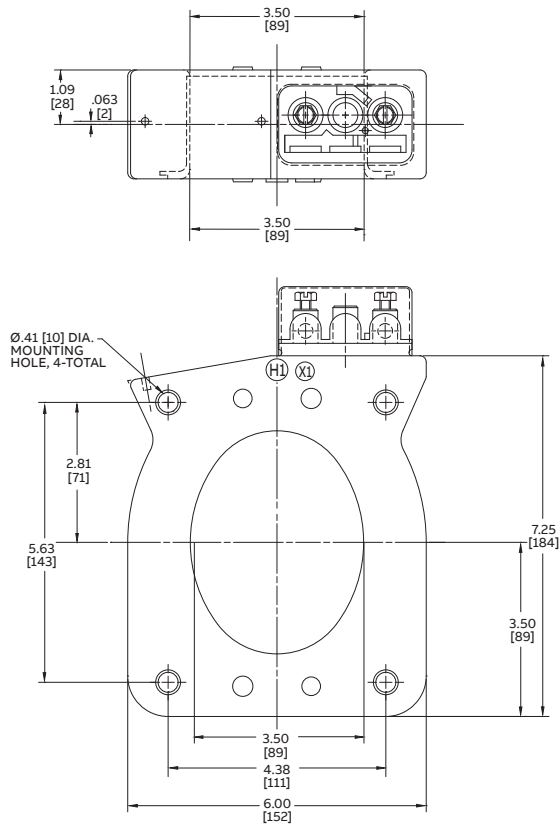


Tapered bottom (CMV and CMV Hi-Temp)

Approximate weight is 6 lbs. (2.7 kg)



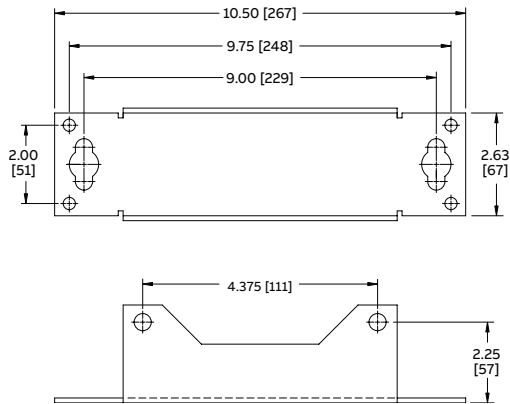
Bus bar adapter (tapered bottom styles only)



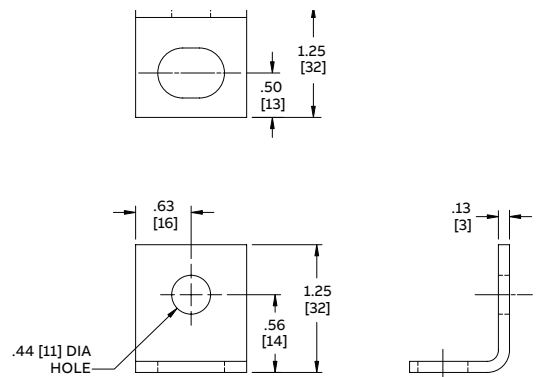
Wide bottom (CMV only)

Approximate weight is 6.5 lbs. (3 kg)

Contact your ABB representative for outline of tapped design.



One-piece base (wide bottom styles only)



Mounting feet, kit of four (wide bottom styles only)

CMV selection guide

Primary ampere rating	Rating factor		IEEE metering accuracy @ 60 Hz	Style number	
	30°C	55°C		Tapered bottom	Wide bottom
100	4.0	3.0	1.2B-0.1	7524A75G17	7524A73G17
200	4.0	3.0	0.3B-0.1	7524A75G01	7524A73G01
300	4.0	3.0	0.3B-0.2	7524A75G02	7524A73G02
400	4.0	3.0	0.3B-0.2	7524A75G03	7524A73G03
500	3.0	2.2	0.3B-0.5	7524A75G12	7524A73G12
600	3.0	2.2	0.3B-0.5	7524A75G04	7524A73G04
800	3.0	2.2	0.3B-0.5	7524A75G05	7524A73G05
1000	2.0	1.5	0.3B-0.5	7524A75G06	7524A73G06
1200	2.0	1.5	0.3B-0.9	7524A75G07	7524A73G07
1500	2.0	1.5	0.3B-0.9	7524A75G08	7524A73G08
2000	1.5	1.2	0.3B-1.8	7524A75G09	7524A73G09
3000	1.33	1.0	0.3B-1.8	7524A75G10	7524A73G10
4000	1.0	0.75	0.3B-1.8	7524A75G11	7524A73G11

CMV Hi-Temp selection guide

Primary ampere rating	Rating factor @ 85° C	IEEE metering accuracy @ 60 Hz	Style number
200	4.0	0.3B-0.1	923A231G01
300	4.0	0.3B-0.2	923A231G02
400	4.0	0.3B-0.2	923A231G03
600	3.0	0.3B-0.5	923A231G04
800	3.0	0.3B-0.5	923A231G05
1000	2.0	0.3B-0.5	923A231G06
1200	2.0	0.3B-0.9	923A231G07
1500	2.0	0.3B-0.9	923A231G08
2000	1.5	0.3B-1.8	923A231G09
3000	1.33	0.3B-1.8	923A231G10
4000	1.0	0.3B-1.8	923A231G11

Additional styles available upon request. Contact your ABB sales representative or call +1-252-827-3212 for more information.

Optional accessories

Accessory	Style number
Mounting feet (kit of four)	9628A05G15
One-piece base	9628A05G16
Terminal cover	9628A05G19
Bus bar adapter*	9628A05G17

* Standard with 7524A75Gxx and 923A231Gxx; for mounting directly on low voltage spade terminals